

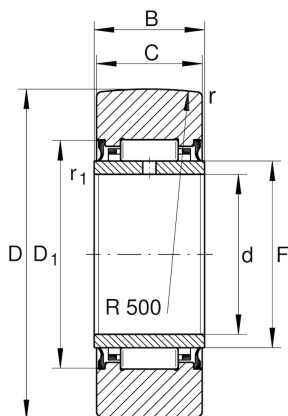
NA2204-2RSR

Yoke type track roller

Schaeffler ID:
0007031920000

Yoke type track rollers NA22...-2RSR,
without axial guidance, lip seals on both
sides

Technical information



Main Dimensions & Performance Data

D	47 mm	Outside diameter
F	25 mm	Raceway diameter inner ring
C	17.8 mm	Width, outer ring
$C_{r w}$	14,000 N	Basic dynamic load rating, radial
$C_{0r w}$	19,300 N	Basic static load rating, radial
$C_{ur w}$	2,700 N	Fatigue load limit, radial
n_{DG}	2,300 1/min	Speed on permanent grease lubrication
	170 g	Weight

Dimensions

d	20 mm	Bore diameter
B	18 mm	Width, inner ring
$D_{1 \min}$	33 mm	Minimum mounting dimension
r_{\min}	1 mm	Minimum chamfer dimension
$r_{1 \min}$	0.3 mm	Minimum chamfer dimension
R	500 mm	Radius of outer ring outside profile